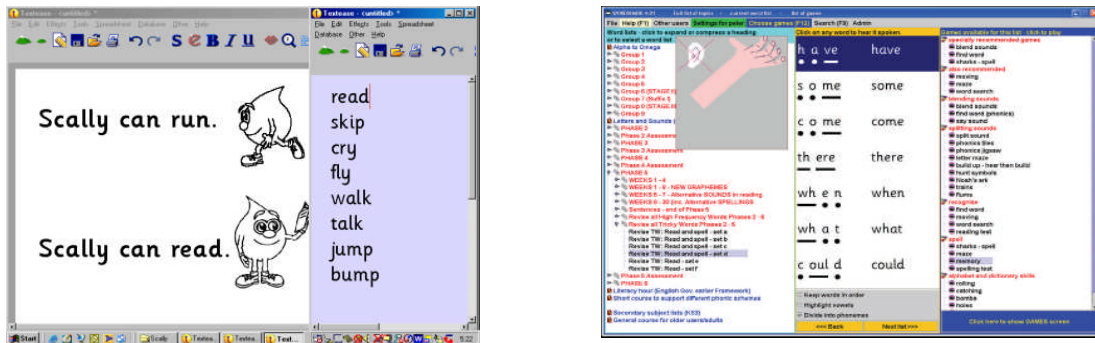


# You have students with SPELLING problems? Technology is one great way to help so come to hear how they can be successful

Mary Delahunty, Yvonne Lynch, Pat Minton

For teachers, parents, students, psychologists, therapists and others-  
primary and secondary



Spelling difficulties need not be a lifetime's embarrassment as with carefully structured, sequential, and thorough multi-sensory teaching students can improve, often markedly so. The technology is available so why not come and learn about it? And it can improve your school's Naplan spelling score!!!

**This hands-on workshop will show you ways of helping struggling students off the computer as well as using a range exemplary software – *Catch Up 1, 2 and 3, Textease, Wordshark, Spell Track and Phoneme Track.***

All this software is very motivating and really does enable students to make significant progress, if it is used well.

Where: SPELD 494 Brunswick Street, North Fitzroy  
When: Friday May 28<sup>th</sup> 10.00am -1.00pm  
Time: Cost: members \$50 non-members \$75

Download a registration form from [www.speldvic.org.au](http://www.speldvic.org.au)  
Bookings are essential as spaces are limited.  
For more information phone 03 9489 4344  
Email: [info@speldvic.org.au](mailto:info@speldvic.org.au)